

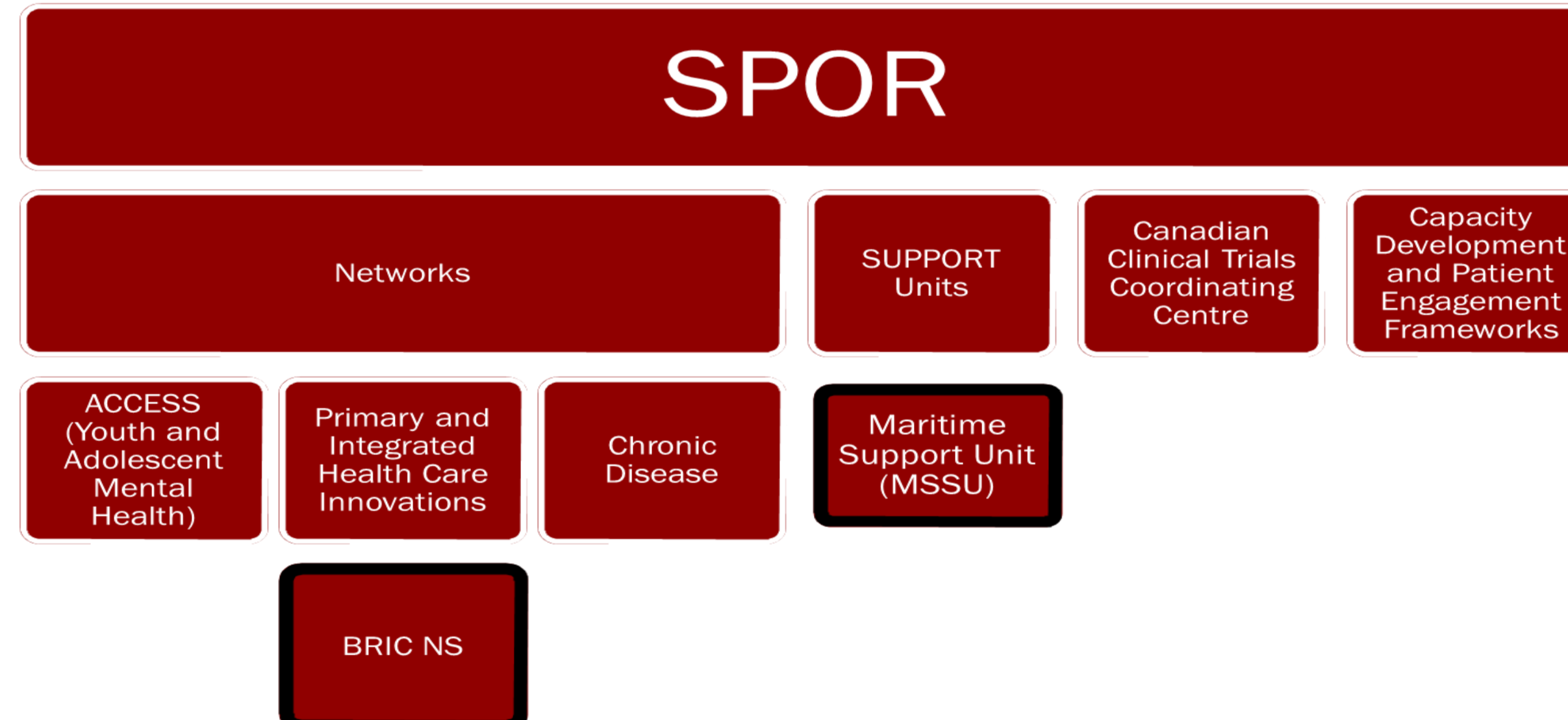


Building Research for Integrated Primary Healthcare



## What is BRIC NS?

- Part of the Canadian Institutes of Health Research (CIHR) Strategy for Patient-Oriented Research (SPOR), **BRIC NS** provides an opportunity to put primary & integrated health care research and access on the national research agenda
- **BRIC NS** is one of 11 Primary & Integrated Health Care Innovations (PIHCI) Networks across the country, forming a network of networks
- As part of the SPOR initiative **BRIC NS** is focused on integrating health research more effectively into care
  - To engage patients as partners in research
  - To focus on patient-identified priorities & to improve patient outcomes



## BRIC NS membership

- An interdisciplinary research network of health professionals, researchers, policy-makers & citizens
- Includes people from all across Nova Scotia who are interested in building research that improves patient outcomes and experience
- Becoming a member is easy! See our website [www.BRICNS.com](http://www.BRICNS.com) for more information.

## BRIC NS Goals & Research Priorities

### Goals

- To support evidence-informed transformation & delivery of more cost-effective primary & integrated health care to improve patient experience.
- To improve health, health equity, & health system outcomes for individuals with, & at risk of developing, complex health needs.

### Research Priorities

With a focus on people & populations with **complex needs**:

- Identification of patients with complex needs & processes/interventions that can help them
- Preventing future complex needs by integrating health promotion into care delivery
- Finding & supporting new approaches to prevention & management of chronic disease

### Network Functions

- Provide research infrastructure to:
  - Bring together researchers, policy makers, clinicians & citizens
  - Facilitate connections between those working in primary & integrated health care within Nova Scotia & across Canada
  - Build capacity in primary & integrated health care research
  - Provide a 'rapid-learning' environment responding to 'real-time' needs for evidence leading to policy & practice change
  - Promotion BRIC NS associated research
  - Facilitate MSSU resources for BRIC NS associated projects

### Targeted CIHR SPOR PIHCI research funding opportunities

- **BRIC NS** members can apply
- Although a number of requirements must be met, the success rate is much higher than regular CIHR operating grant calls

## Acknowledgements

BRIC NS is supported by:



Contact **BRIC NS**  
[www.bricns.com](http://www.bricns.com)  
[bricns@dal.ca](mailto:bricns@dal.ca)